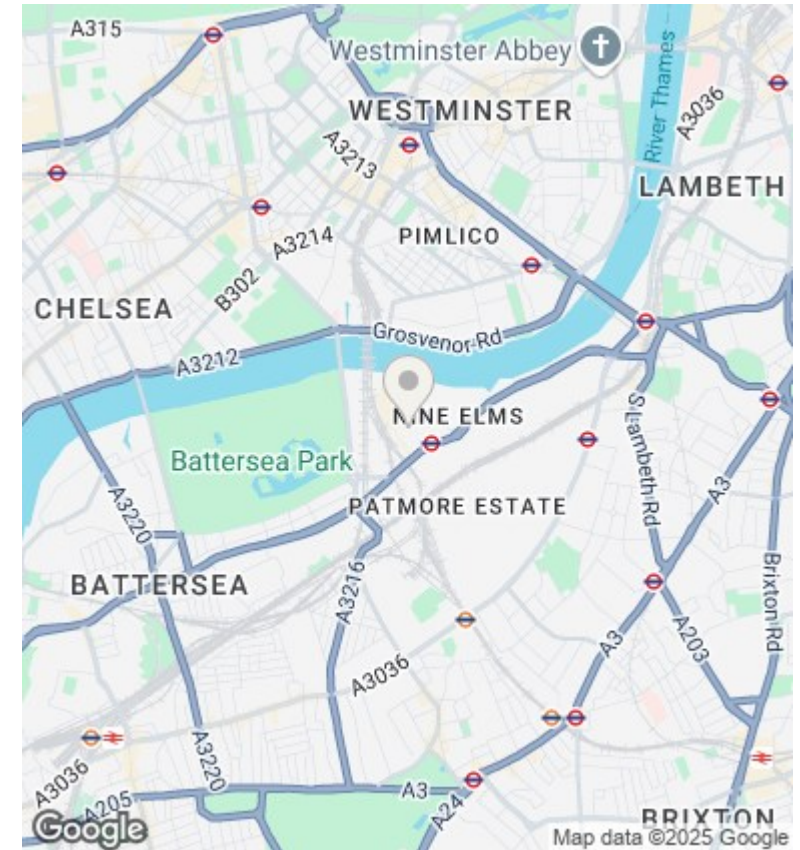
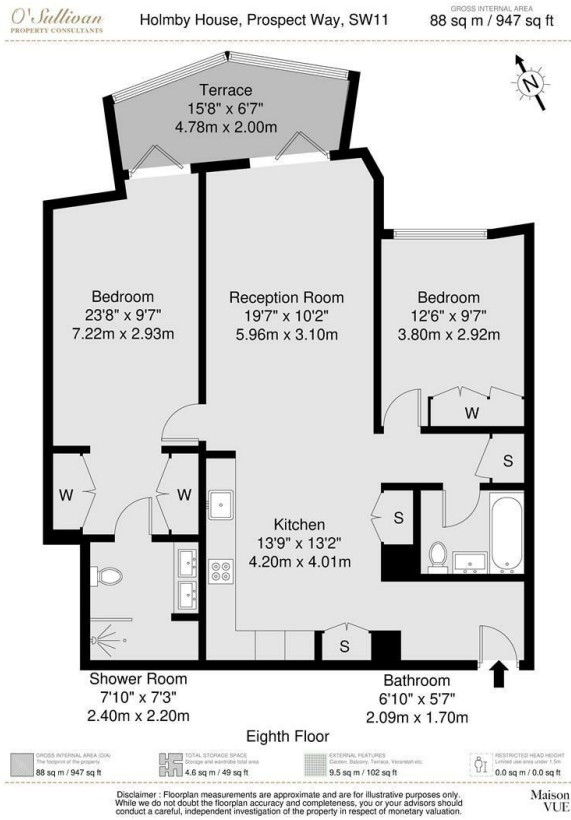


## Holmby House, Prospect Way, Battersea Power Station, London

Asking Price £1,595,000

- 2 bedroom / 2 bathroom (1 Ensuite)
- 8th Floor with stunning views
- Communal Gardens
- Swimming Pool & SPA
- 947 sqft Internal Space + 49 sqft Storage Space +102 sqft Winter Garden (1,098 sqft total)
- Comfort cooling and Underfloor heating
- 24 hrs Concierge
- Riverside Location
- Winter Garden
- Residents Gym



## Directions

## Viewings

Viewings by arrangement only. Call 02070990800 to make an appointment.

## Council Tax Band

G

## EPC Rating:

B

Energy Efficiency Rating		Current	Potential
<i>Very energy efficient - lower running costs</i>			
(92 plus) <b>A</b>			
(81-91) <b>B</b>		86	86
(69-80) <b>C</b>			
(55-68) <b>D</b>			
(39-54) <b>E</b>			
(21-38) <b>F</b>			
(1-20) <b>G</b>			
<i>Not energy efficient - higher running costs</i>			
<b>England &amp; Wales</b>		EU Directive 2002/91/EC	